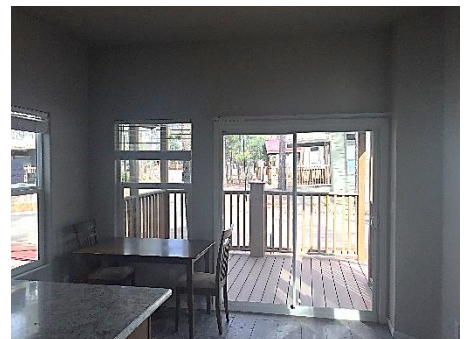


Woodfield

Cottage Home— Lot 45

\$73,700

399 Square Feet | 1-Bedroom | 1-Bath



**The home is priced turn-key complete.
Don't like this lot?
Please ask us about choosing a different Woodfield lot.**



Cottage Home – Lot 45

\$73,700

Start enjoying your summer experience at Woodfield much sooner by purchasing this on-site Park Model Home.

The Cottage model includes beautiful interior features such as shaker-style cabinetry, recessed lighting in the kitchen and bathroom, 2" faux wood blinds, laundry area for a stack-able washer & dryer, built-in entertainment cabinet and built-in dresser bay. The upgrades in this home include 9-1/2' flat ceilings, a dishwasher, and planked flooring throughout plus an 8' covered deck to enjoy the beautiful mountain air. The exterior features include a metal roof, engineered fiber cement lap siding with matching skirting, and vinyl framed dual pane, low-e windows and doors. Central heating and cooling are also included.

This model home is priced complete at \$73,700. The home is currently placed on lot 45 but you have the option to choose another available lot.

Interested in a wrap-around porch or second bedroom? No problem. Site built options can still be added to make this the summer home of your dreams.*

*Site built options are an added cost

To schedule an appointment to view this home please call 928-242-9326.